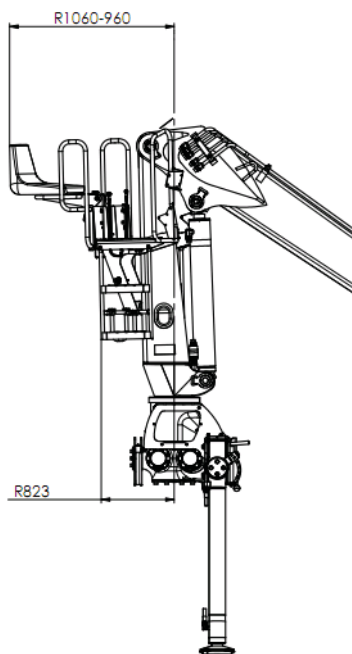
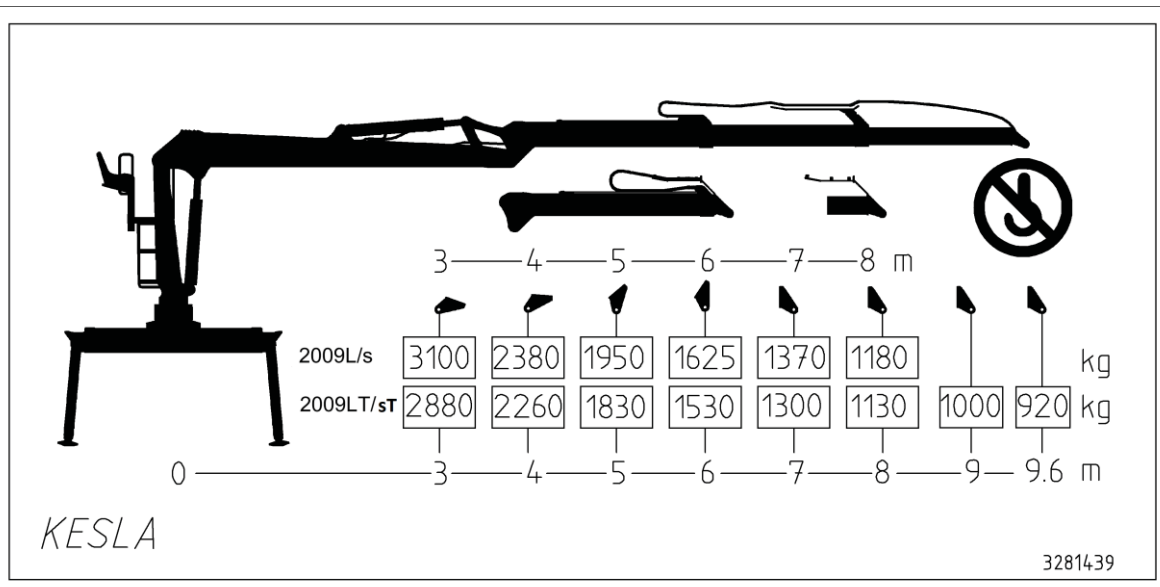


## KESLA 2009s / 2009sT

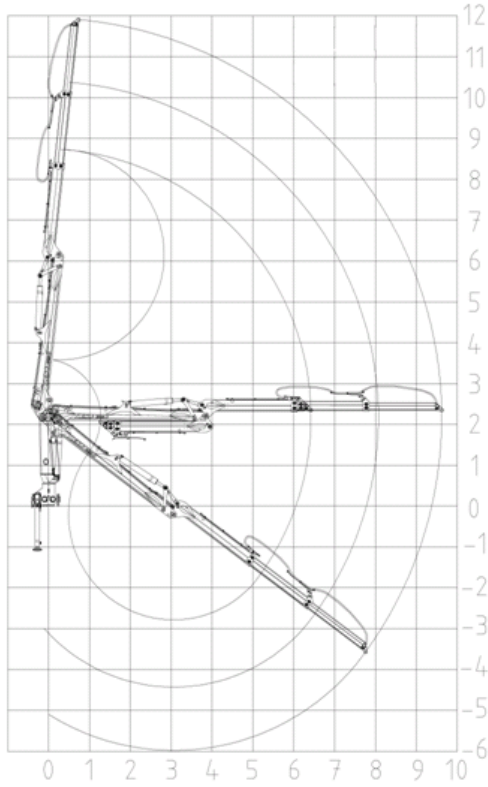
MODEL		2009s	2009sT
Lifting capacity -net	kNm	95	89
Max. outreach	m	8,05	9,61
Boom extension	m	1,60	2 x 1,60
Slewing torque,gross	kNm	22	
Slewing angle	°	415	
Weight *	kg	1 980	2140
Pump recommendation			
- pressure	Bar	240	
- flow		-single pump 90 l/min -double pump 2 x 70 – 80 l/min	
- power requirement		-single pump 27 – 35 kW - double pump 45 – 60 kW	
*Weight is without grapple & rotator			

### Allowed loads

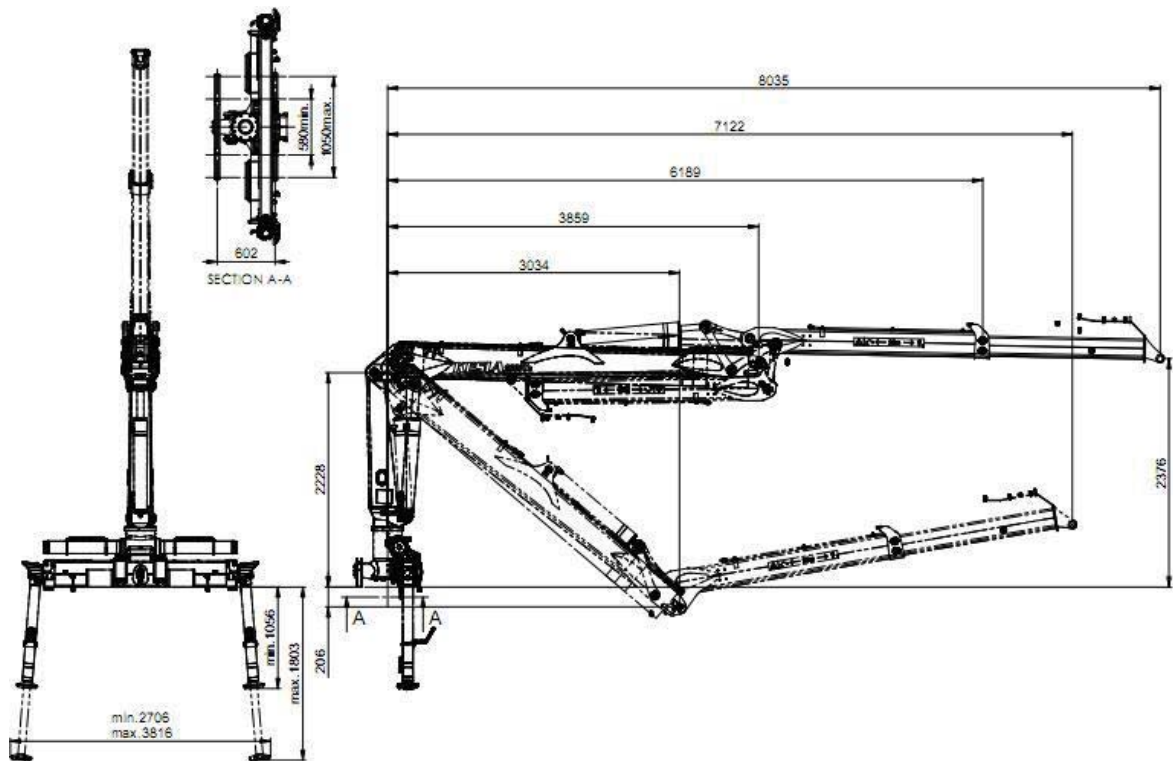


Rotation dimensions of seat

### Outreach diagram



Dimension drawings -2009s



## Dimension drawings – 2009sT

### 2009sT

